

# ALL PRODUCT DIMENSIONS ARE BEFORE COATING

REFERENCE DRAWING ONLY - NOT TO BE USED FOR INSPECTION PURPOSES

DO NOT SCALE

## MATERIAL SPECIFICATION

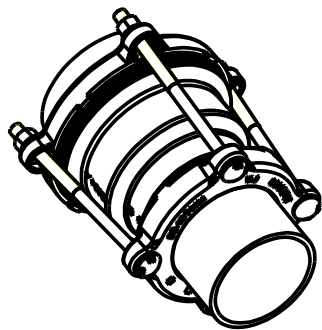
**CENTRE SLEEVE (Part 1)**  
Ductile Iron to BS EN1563:1997  
SYMBOL EN-GJS-450-10  
**END RINGS (Parts 2 & 4)**  
Ductile Iron to BS EN1563:1997  
SYMBOL EN-GJS-450-10  
**GASKETS (Parts 3 & 5)**  
EPDM to BS EN 681-1, TYPE WA, WC  
NITRILE to BS EN 681-1, TYPE WA, WC, WG  
or BS EN 682, TYPE G  
**BOLTS (Part 6)**  
Steel to BS EN ISO 898-1:1999  
Property Class 4.8  
**NUTS (Part 7)**  
Steel to BS4190:2001  
Grade 4  
**WASHERS (Part 8)**  
Stainless Steel to BS1449:Part 2:1983  
Grade 304S15

## FINISH SPECIFICATION

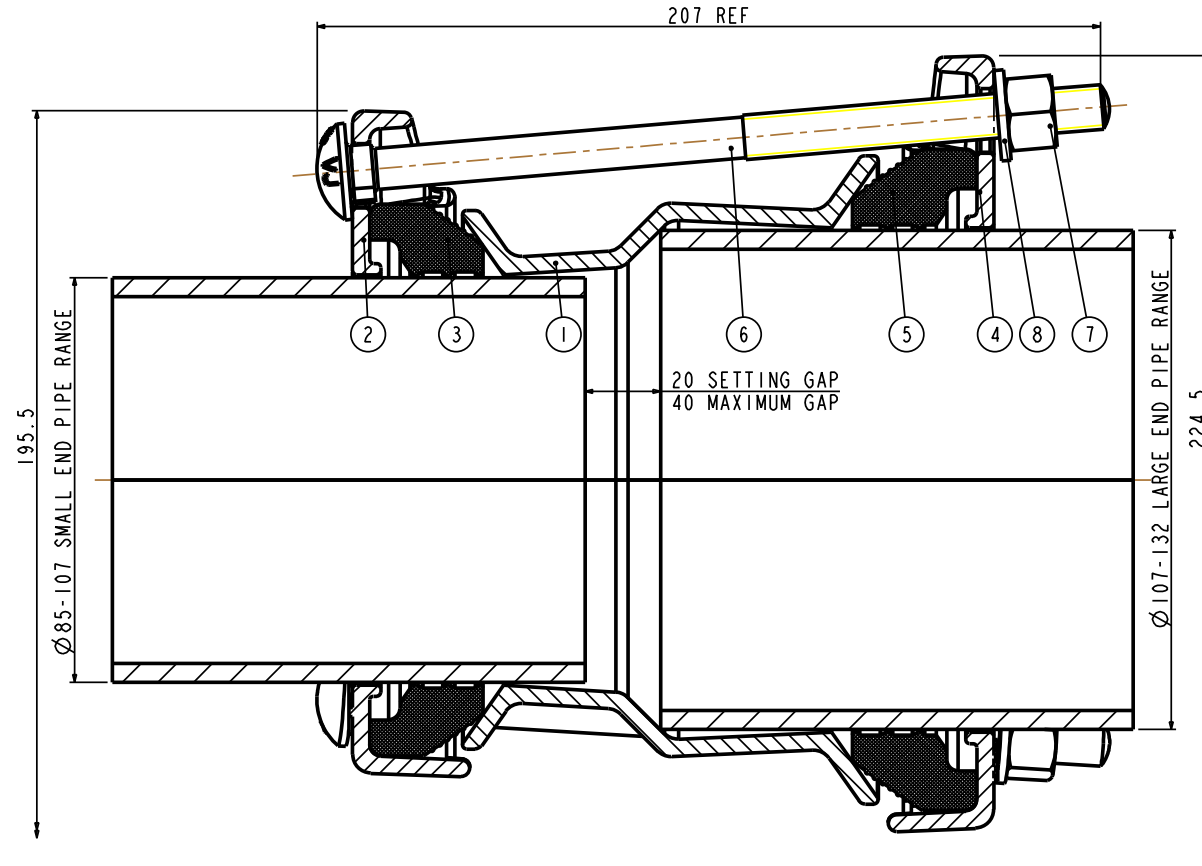
## NOTES

## BOLT TORQUE

55-65Nm



ISOMETRIC VIEW



PIPE RANGES				GASKET MOULDS		BOLTS	WORKING PRESSURE	TEST PRESSURE	WEIGHT KG	ASSEMBLY DRG NO
SMALL END		LARGE END		SMALL END	LARGE END					
85	107	107	132	12392_3	12392_4	4-M12x200	16bar	24bar	4.9	12395_4

OVERALL DIMENSIONS DRAWING  
FOR REFERENCE ONLY  
VIKING JOHNSON RESERVE THE  
RIGHT TO AMEND DETAILS WITHOUT  
PRIOR NOTIFICATION

This drawing is the exclusive property of VIKING JOHNSON and is confidential and must not be reproduced or disclosed to a third party without written consent. It must be used only for the purpose which it has been issued and is returnable on request.

CRANE A Crane Co Company

OVERALL DIMENSIONS OF  
MAXIFIT  
STEPPED COUPLINGS  
FOR 85-107 TO 107-132mm O.D. PIPE RANGES

RELEASE LEVEL: Manufacture

SHEET 1 OF 1



DRAWN	P.N.	SCALE	1:500
DATE	31-Jan-07	GENERIC	O.DIM.12395_4.1

DRG NO O.DIM.12395\_4\_1