

HandiBand

Datasheet

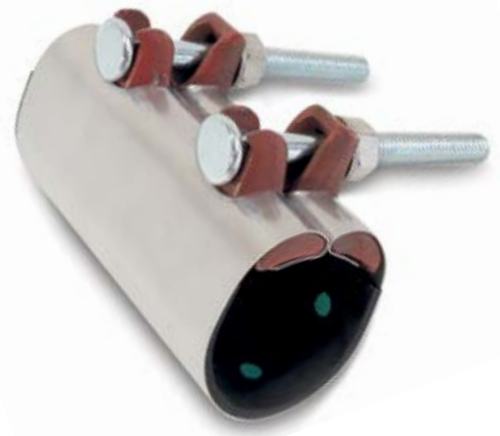
1/1

3" = 1 Bolt

6" = 2 Bolts

HandiBand

Nom Dia	OD Range	Working Pressure (bar)		Clamp Length
		Water	Gas	
0.50"	15.0 - 22.0	7.0	1.8	3" (75mm)
0.50"	15.0 - 22.0	7.0	1.8	6" (150mm)
0.75"	26.0 - 30.0	7.0	1.8	3" (75mm)
0.75"	26.0 - 30.0	7.0	1.8	6" (150mm)
1.00"	33.0 - 37.0	7.0	1.8	3" (75mm)
1.00"	33.0 - 37.0	7.0	1.8	6" (150mm)
1.25"	42.0 - 45.0	7.0	1.8	3" (75mm)
1.25"	42.0 - 45.0	7.0	1.8	6" (150mm)
1.50"	48.0 - 54.0	7.0	1.8	3" (75mm)
1.50"	48.0 - 54.0	7.0	1.8	6" (150mm)
2.00"	60.0 - 64.0	7.0	1.8	3" (75mm)
2.00"	60.0 - 64.0	7.0	1.8	6" (150mm)



Technical Information

Pressure Rating

- ▶ Water = In accordance the rating as defined in the tables
- ▶ Gas = In accordance the rating as defined in the tables

Vacuum Pressure

Capable of accommodating a vacuum pressure of -0.7 bar.

Site Test Pressure

1.5 times working pressure for short duration (2 hours).

Angularity

HandiBand fittings are not able to accommodate any angularity.

Temperature Rating of Product

- ▶ EPDM = -20°C to +40°C
- ▶ Nitrile = 20°C to +40°C

NOTE: HandiBand is not suitable for use on heating systems with fluctuating temperatures

End Load Due to Internal Pressure

HandiBand fittings DO NOT resist end load due to the internal pressure - adequate external restraint must be provided to prevent pipe pull out from the clamp.

Materials & Relevant Standards

Shell

Stainless Steel to BS1449:Part2 Grade 304 / Steel No. 1.4301

Lugs

Whitehart malleable cast iron equivalent to BS EN 1562 Grade ENGJMW-400-5

Studs/Nuts

Mild steel to BS EN ISO 898-1 Property class 4.6

Gasket

- ▶ EPDM to BS EN681-1, TYPE WA, WC 60 IRHD
- ▶ Nitrile to BS EN682, Type G 60 IRHD

Every effort has been made to ensure that the information contained in this publication is accurate at the time of publishing. Crane Ltd assumes no responsibility or liability for typographical errors or omissions or for any misinterpretation of the information within the publication and reserves the right to change without notice.

DR8550_03_2020_ISSUE 6