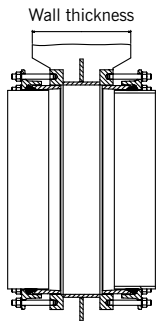


Wall Coupling Variations

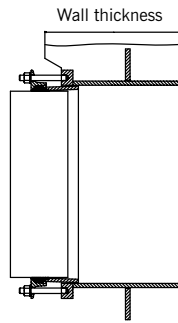
Datasheet

1/1

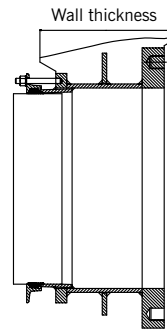
The Viking Johnson Wall Coupling is available in nine variations:



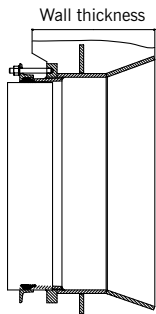
Type 1 Coupling/Coupling



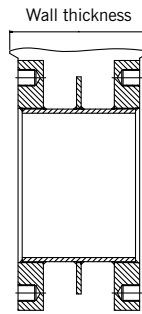
Type 2 Coupling/Plain End



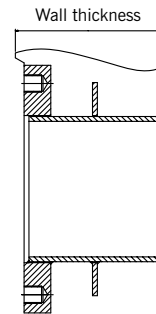
Type 3 Coupling/Flange



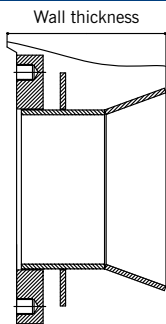
Type 4 Coupling/Bellmouth



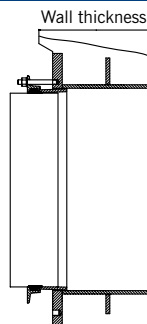
Type 5 Flange/Flange



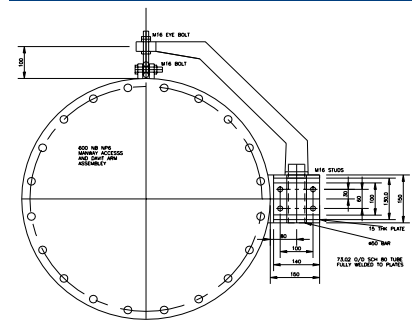
Type 6 Flange/Plain End



Type 7 Flange/Bellmouth



Type 8 Harnessing



Type 9 Man Entry

Viking Johnson Wall Couplings are patented products - UK Patent No. 2263323B, US Patent No.5505499.

Materials, Relevant Standards & Approvals

Body, Centre Sleeve & End Rings:

DN80 to DN300:

- ▶ Carbon steel to BS EN 10025: Grade S275JR
- ▶ Ductile iron to BS EN 1563: Symbol EN-GJS-450-10

DN350 to DN1800:

- ▶ Carbon steel to BS EN 10025: Grade S275JR

Gasket

EPDM to BS EN 681 Part 1 Type WA

Coatings

Wall Coupling Bodies & End Rings:

- ▶ Standard Rilsan Nylon 11.
- ▶ Optional - Scotchkote 206N fusion bonded epoxy.

Studs:

- ▶ Sheraplex coated to WIS 4-52-03.

Tee Bolts or Stud

Steel to BS EN ISO 898-1: Property Class 4.8

Washers

Stainless Steel to BS 1449: Part 2: Grade 304S15

Approvals

The following water contact materials used in Wall Couplings

are approved for use with potable water:-

Rilsan Nylon 11:

- ▶ WRAS, AS/NZS 4020, DVGW, W270, ACS & KIWA

EPDM Gaskets:

- ▶ WRAS, AS/NZS 4020

Every effort has been made to ensure that the information contained in this publication is accurate at the time of publishing. Crane Ltd assumes no responsibility or liability for typographical errors or omissions or for any misinterpretation of the information within the publication and reserves the right to change without notice.