
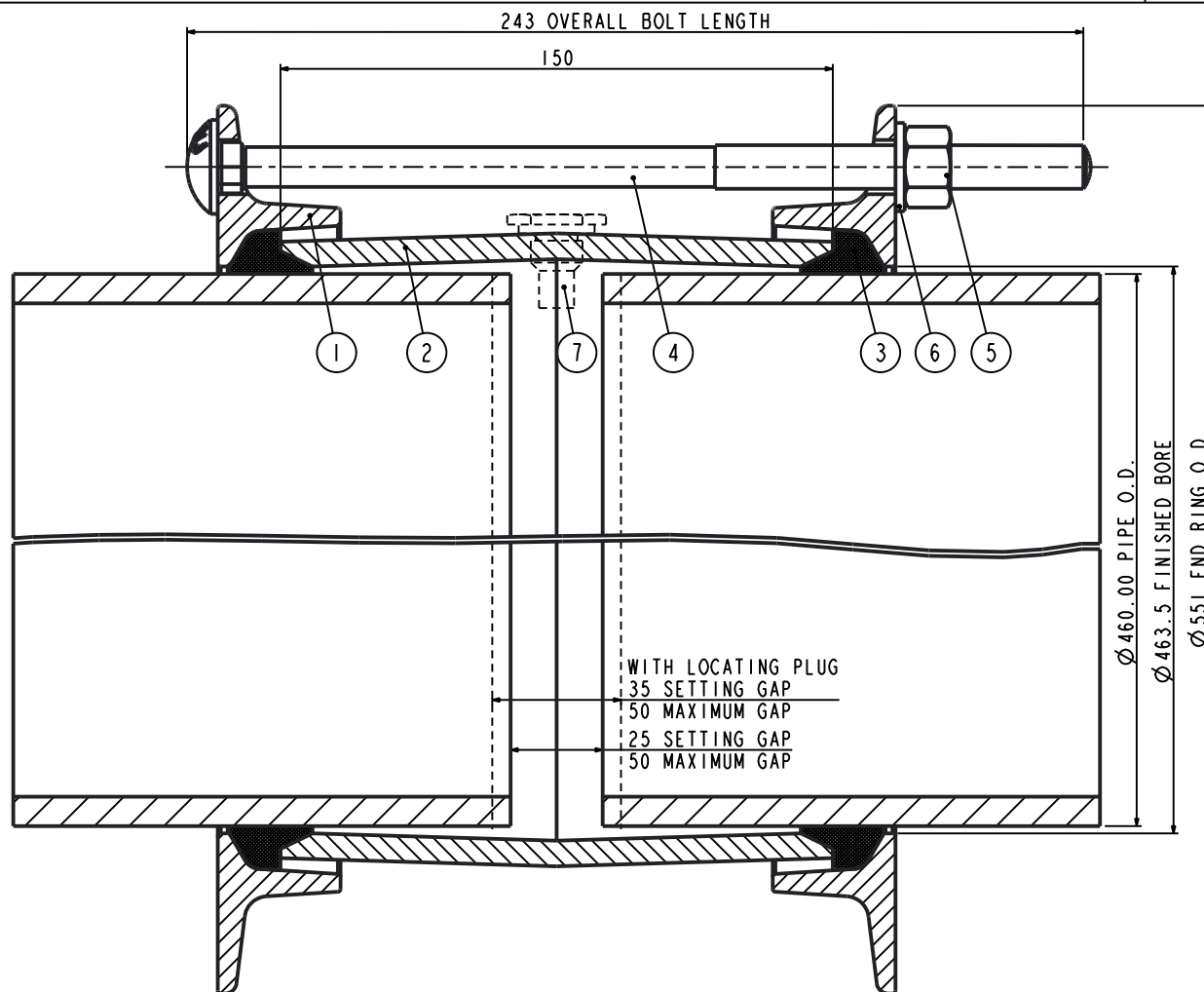


ALL PRODUCT DIMENSIONS ARE BEFORE COATING

REFERENCE DRAWING ONLY - NOT TO BE USED FOR INSPECTION PURPOSES

DO NOT SCALE

MATERIAL SPECIFICATION
END RING (Part 1) STEEL to BS EN10025-2 GRADE S275JR CENTRE SLEEVE (Part 2) STEEL to BS EN10025-2 GRADE S275JR GASKET (Part 3) RUBBER 80 HARDNESS Grade to suit service BOLTS (Part 4) STEEL BS EN ISO898-1 PROPERTY CLASS 4.8 NUTS (Part 5) STEEL BS4190 GRADE 4 WASHERS (Part 6) STAINLESS STEEL BS1449:PART 2 GRADE 304S15 LOCATING PLUGS (Part 7) STEEL BS970:PART 3 GRADE 230M07
FINISH SPECIFICATION
NOTES
Locating Plugs/Pin Register. If Locating Plugs/Pins are required, 3 Plugs/Pins are to be supplied.
BOLT TORQUE
Torque to 55-65Nm

ISOMETRIC VIEW



Pipe O.D. includes a Coating of 1.50mm thick. Un-Coated Pipe is 457.00mm O.D.

PIPE O.D.	PIPE MATERIAL	PIPE TOLERANCE		BOLTS NO-SIZE	GASKET MOULD	WORKING PRESSURE	TEST PRESSURE	WEIGHT KG	ASSEMBLY DRG NO
		+	-						
460.00	STEEL	1.60	1.60	8-M12x235	J55LS	24.1bar	36.2bar	25.0	7829_293

OVERALL DIMENSIONS DRAWING
FOR REFERENCE ONLY
VIKING JOHNSON RESERVE THE
RIGHT TO AMEND DETAILS WITHOUT
PRIOR NOTIFICATION

This drawing is the exclusive property of VIKING JOHNSON and is confidential and must not be reproduced or disclosed to a third party without written consent. It must be used only for the purpose which it has been issued and is returnable on request.

CRANE A Crane Co Company

OVERALL DIMENSIONS OF
VIKING JOHNSON COUPLING ASSEMBLY
'LO2' SECTION
FOR 460.00mm O.D. PIPE

RELEASE LEVEL: Released

SHEET 1 OF 1

VIKING JOHNSON
World leaders in pipe joints and repair products

DRAWN	AUTO	SCALE	N.T.S.
DATE	07/12/18	GENERIC	7829

DRG NO SKP2984-1