

# ALL PRODUCT DIMENSIONS ARE BEFORE COATING

REFERENCE DRAWING ONLY - NOT TO BE USED FOR INSPECTION PURPOSES

DO NOT SCALE

## MATERIAL SPECIFICATION

**END RING (Part 1)**  
STEEL to  
BS EN10025-2:2004 GRADE S275JR  
**CENTRE SLEEVE (Part 2)**  
STEEL to  
BS EN10025-2:2004 GRADE S275JR  
**GASKET (Part 3)**  
RUBBER 80 HARDNESS  
Grade to suit service  
**BOLTS (Part 4)**  
STEEL BS EN ISO898-1:2013  
PROPERTY CLASS 4.8  
**NUTS (Part 5)**  
STEEL BS4190:2001  
GRADE 4  
**WASHERS (Part 6)**  
STAINLESS STEEL BS1449:PART 2:1983  
GRADE 304S15  
**LOCATING PLUGS (Part 7)**  
STEEL BS970:PART 3:1991  
GRADE 230M07

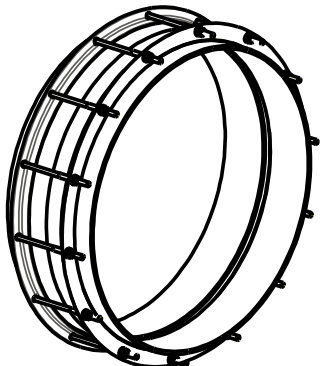
## FINISH SPECIFICATION

## NOTES

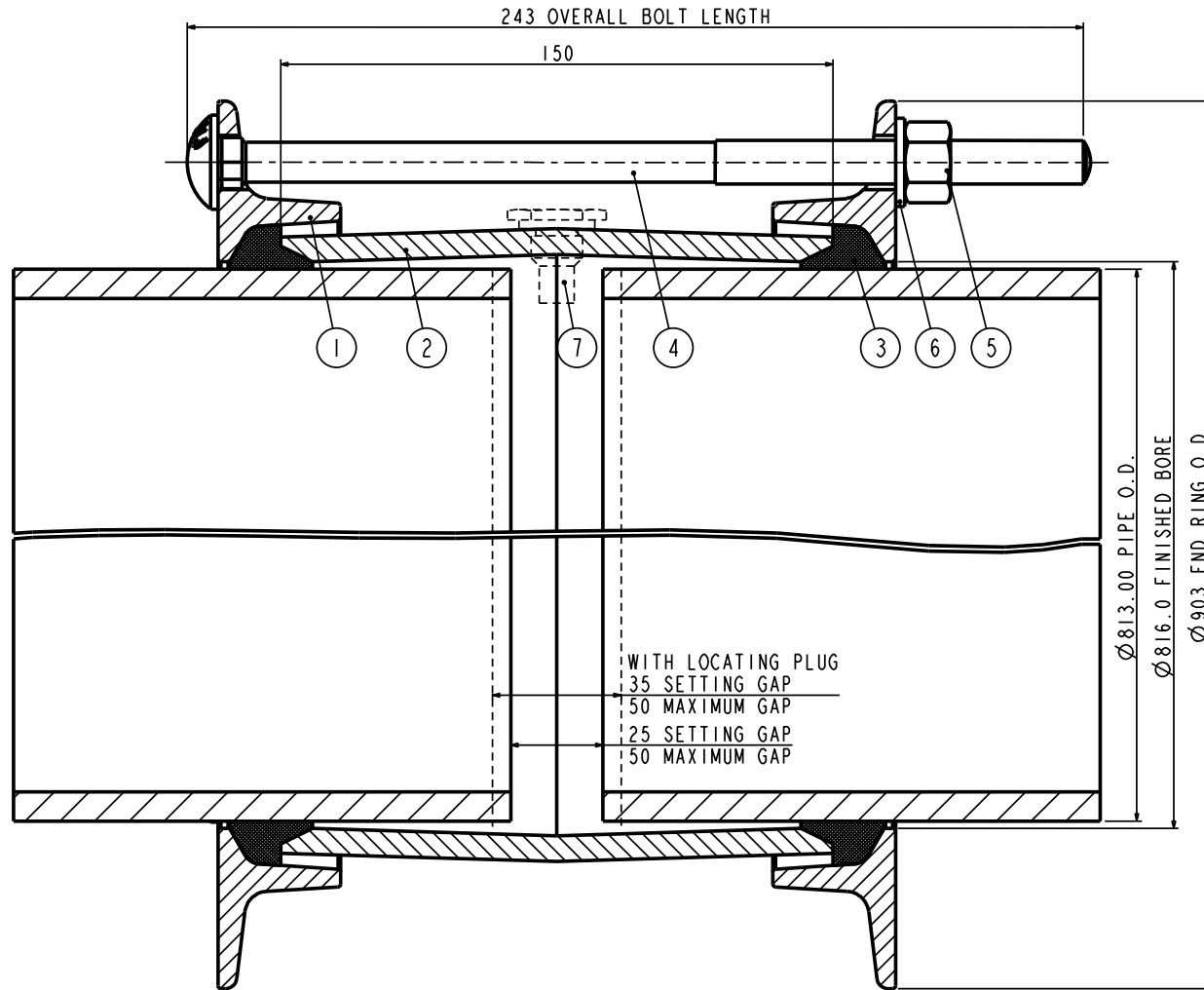
Locating Plugs/Pin Register.  
If Locating Plugs/Pins are required,  
3 Plugs/Pins are to be supplied.

## BOLT TORQUE

Torque to 55-65Nm



ISOMETRIC VIEW



PIPE O.D.	PIPE MATERIAL	PIPE TOLERANCE		BOLTS NO-SIZE	GASKET MOULD	WORKING PRESSURE	TEST PRESSURE	WEIGHT KG	ASSEMBLY DRG NO
		+	-						
813.00	STEEL	1.60	1.60	14-M12x235	J65LS	19.8bar	29.7bar	43.3	7829_230

OVERALL DIMENSIONS DRAWING  
FOR REFERENCE ONLY  
VIKING JOHNSON RESERVE THE  
RIGHT TO AMEND DETAILS WITHOUT  
PRIOR NOTIFICATION

This drawing is the exclusive property of VIKING JOHNSON and is confidential and must not be reproduced or disclosed to a third party without written consent. It must be used only for the purpose which it has been issued and is returnable on request.

CRANE A Crane Co Company

OVERALL DIMENSIONS OF  
VIKING JOHNSON COUPLING ASSEMBLY  
'LO2' SECTION  
FOR 813.00mm O.D. PIPE

RELEASE LEVEL: Manufacture

SHEET 1 OF 1

**VIKING JOHNSON**  
World leaders in pipe joints and repair products

DRAWN	AUTO	SCALE	N.T.S.
DATE	10/06/13	GENERIC	7829

DRG NO SKP71-1