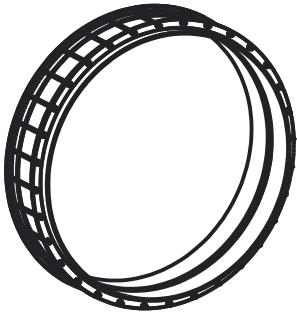
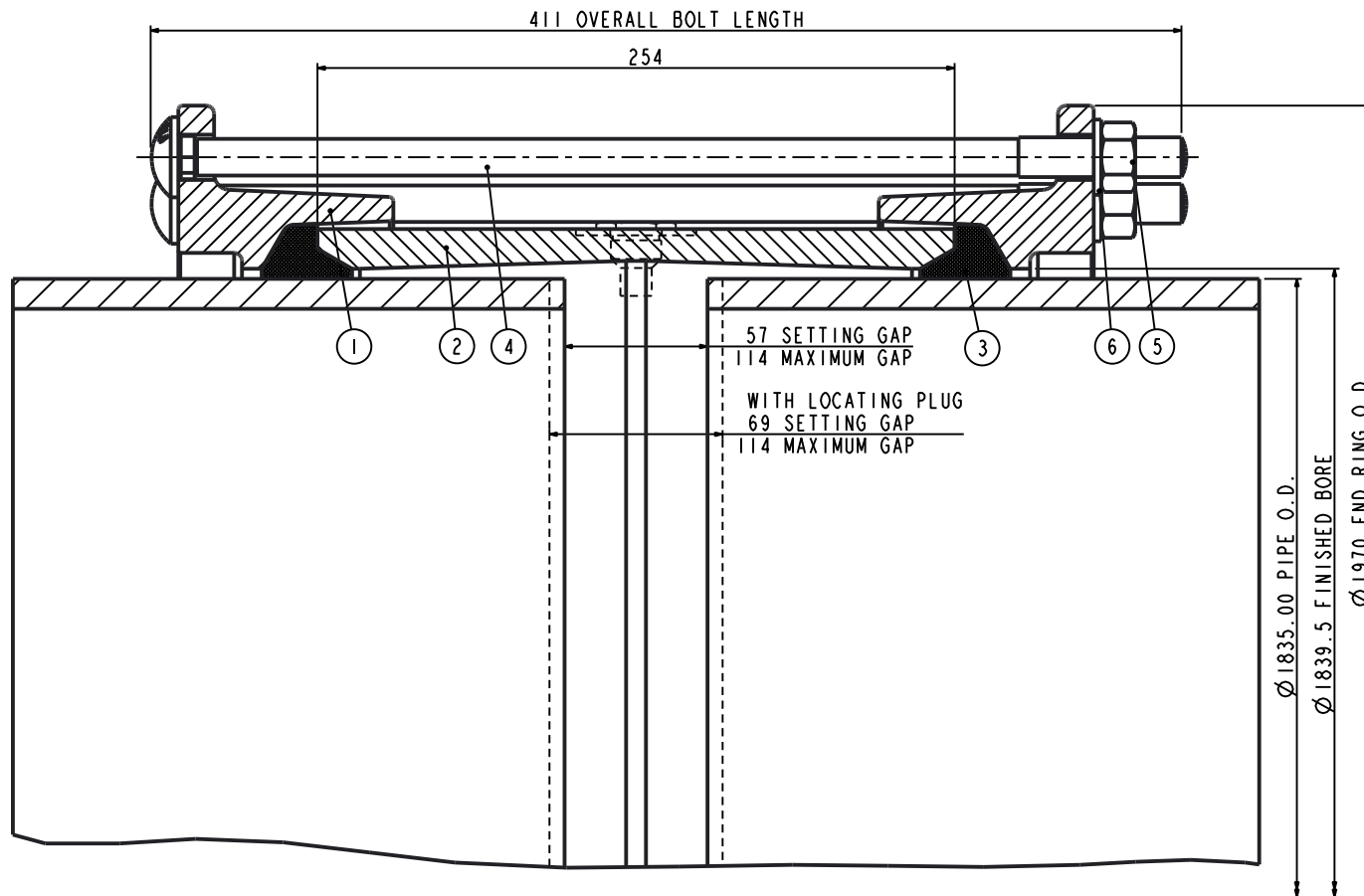


ALL PRODUCT DIMENSIONS ARE BEFORE COATING

REFERENCE DRAWING ONLY - NOT TO BE USED FOR INSPECTION PURPOSES

DO NOT SCALE

MATERIAL SPECIFICATION
END RING (Part 1) STEEL to BS EN10025-2 GRADE S355JR CENTRE SLEEVE (Part 2) STEEL to BS EN10025-2 GRADE S355JR GASKET (Part 3) RUBBER 70 HARDNESS Grade to suit service BOLTS (Part 4) STEEL BS EN ISO898-1 PROPERTY CLASS 4.8 NUTS (Part 5) STEEL BS4190 GRADE 4 WASHERS (Part 6) STAINLESS STEEL BS1449:PART 2 GRADE 304S15
FINISH SPECIFICATION
NOTES
Locating Plugs/Pin Register. If Locating Plugs/Pins are required, 3 Plugs/Pins are to be supplied.

ISOMETRIC VIEW



Pipe O.D includes a Coating of 3.0mm thick. Un-Coated Pipe is 1829.00mm O.D.

PIPE O.D.	PIPE MATERIAL	TOLERANCE ON O.D.		BOLTS	GASKET MOULD	TEST PRESSURE	WEIGHT KG	ASSEMBLY DRG NO
		+	-					
1835.00	STEEL	3.00	3.00	32-M16x400	J184H	36.10bar	378.40	8771_995

OVERALL DIMENSIONS DRAWING
FOR REFERENCE ONLY
VIKING JOHNSON RESERVE THE
RIGHT TO AMEND DETAILS WITHOUT
PRIOR NOTIFICATION

This drawing is the exclusive property of VIKING JOHNSON and is confidential and must not be reproduced or disclosed to a third party without written consent. It must be used only for the purpose which it has been issued and is returnable on request.

CRANE A Crane Co Company



OVERALL DIMENSIONS OF
VIKING JOHNSON
COUPLING ASSEMBLY
'XSXG' SECTION
FOR 1835.00mm O.D. PIPE

RELEASE LEVEL: Released

SHEET 1 OF 1



DRAWN	AUTO	SCALE	N.T.S.
DATE	07/12/18	GENERIC	8771_ODIMS_1

DRG NO SKP12874-1