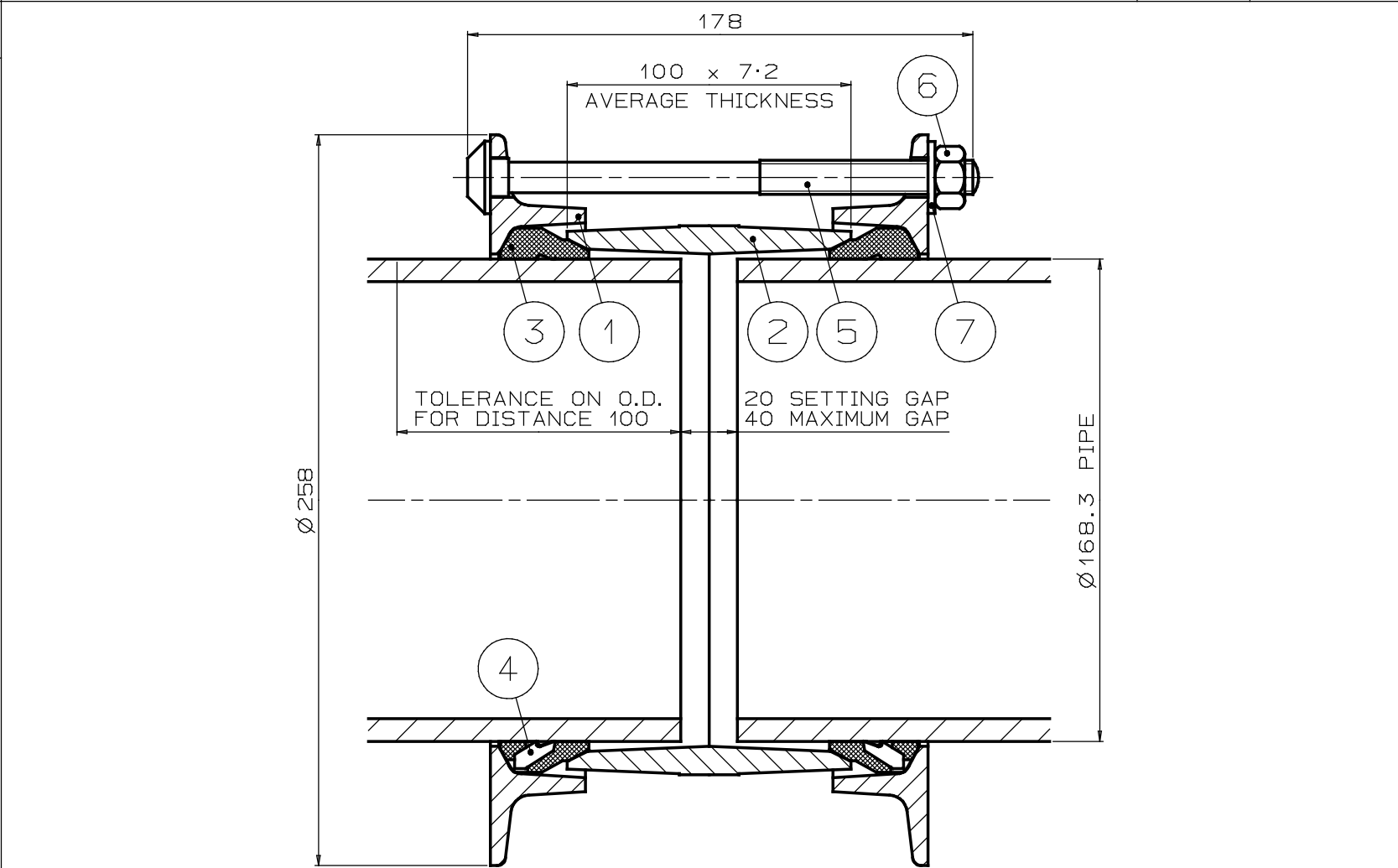




|  |  |  |
|--|--|--|
|  |  |  |
|--|--|--|

|                                    |  |  |
|------------------------------------|--|--|
| MATERIAL SPECIFICATION             |  |  |
| END RING (Part 1)                  |  |  |
| Steel to BS EN10025-2              |  |  |
| Grade S275JR                       |  |  |
| CENTRE SLEEVE (Part 2)             |  |  |
| Ductile Iron to BS EN1563          |  |  |
| SYMBOL EN-GJS-450-10               |  |  |
| GASKET (Part 3)                    |  |  |
| 70 & 80 IRHD EPDM to BS EN681-1 or |  |  |
| 70 & 80 IRHD Nitrile to BS2494     |  |  |
| INSERT (Part 4)                    |  |  |
| Stainless Steel to BS3146          |  |  |
| Grade ANC2                         |  |  |
| BOLT (Part 5)                      |  |  |
| Steel to BS EN ISO898-1            |  |  |
| Property Class 8.8                 |  |  |
| NUT (Part 6)                       |  |  |
| Steel to BS EN29898-2              |  |  |
| Grade 8.0                          |  |  |
| WASHER (Part 7)                    |  |  |
| Stainless Steel to BS1449:Part 2   |  |  |
| Grade 304S15                       |  |  |

|               |               |        |
|---------------|---------------|--------|
| 7             | WASHER        | 6      |
| 6             | NUT           | 6      |
| 5             | BOLT          | 6      |
| 4             | INSERT        | 14     |
| 3             | GASKET        | 2      |
| 2             | CENTRE SLEEVE | 1      |
| 1             | END RING      | 2      |
| PART          | DESCRIPTION   | NO OFF |
| LIST OF PARTS |               |        |



| PIPE O.D. | TOLERANCE ON O.D. | BOLTS No-ØxLEN | GASKET MOULD | INSERT NOxTYPE | WEIGHT KG | PRESSURE (bar) |      | ASSEMBLY DRG NO |
|-----------|-------------------|----------------|--------------|----------------|-----------|----------------|------|-----------------|
|           |                   |                |              |                |           | WORKING        | TEST |                 |
| 168.3     | +1.6<br>-0.8      | 6-M12x170      | 1369         | 7 x B          | 9.3       | 16             | 24   | 7561/10         |

|   |  |   |  |   |              |  |  |
|---|--|---|--|---|--------------|--|--|
| <b>OVERALL DIMENSIONS FOR REFERENCE ONLY</b><br>VIKING JOHNSON RESERVE THE RIGHT TO AMEND DETAILS WITHOUT PRIOR NOTIFICATION<br><small>This drawing is the exclusive property of VIKING JOHNSON and is confidential and must not be reproduced or disclosed to a third party without written consent. It must be used only for the purpose which it has been issued and is returnable on request.</small> |  | TITLE<br><b>OVERALL DIMENSIONS OF FLEXLOCK COUPLING FOR 168.3mm O.D. PIPE</b> |  |  <b>VIKING JOHNSON</b><br><i>World leaders in pipe joint's and repair products</i> |              |  |  |
|  A Crane Co Company  |  | DRAWN   |  | CAD   | DATE 7:11:95 |  |  |
|   |  | SCALE N.T.S.  |  | P.N.  | APPROVED     |  |  |
|   |  | CHECKED   |  |   |              |  |  |
|   |  | DRG NO. SKC21606-1  |  |   |              |  |  |
|   |  | ISSUE C   |  |   |              |  |  |